

OUTLINE SCHEME PROGRAMME

Activity	2020	2021	2022	2023	2024	2025	2026	2027	2028
Stage 1 Data Collection and surveys	█								
Stage 1 Hydrological Analysis	█	█							
Stage 1 Hydraulic Analysis		█	█						
Stage 1 Scheme analysis & development			█	█	█	█	█		
Stage 2 Planning					█	█	█		
Stage 3 Detailed design of Scheme								█	
Stage 4 Construction works								█	█
Stage 5 Scheme Operational									█

Timelines provided as current best estimate but are subject to revision. The Project Team are working hard to mitigate programme delay by assessing potential opportunities to accelerate project tasks.

CONTACT US

You can keep in touch with the project through our website where we will be posting updates on progress and details of works that are ongoing. For further enquiries feel free to contact us via email or post at:

NA DÚNAIBH FRS Project Manager

Project Office: Tetra Tech RPS, The Enterprise Fund Business Centre, Ballyraine, Letterkenny, Co Donegal, F92 AF43.

Email up to 30th March 2026: RPS.Downingsfrs@rps.tetrattech.com

Email from 1st April 2026: DowningsFRS@tetrattech.com

RELEVANT LINKS

Website: <https://countydonegalfrs.ie/downingsfrs/>

NA DÚNAIBH

Flood Relief Scheme

Newsletter No.18
March 2026

<https://countydonegalfrs.ie/downingsfrs>



CURRENT POSITION OF THE PROJECT

The Project Team is working to finalise the Stage I technical reports and associated deliverables. The Preferred Scheme has been identified and the Stage II (Planning) work is ongoing.

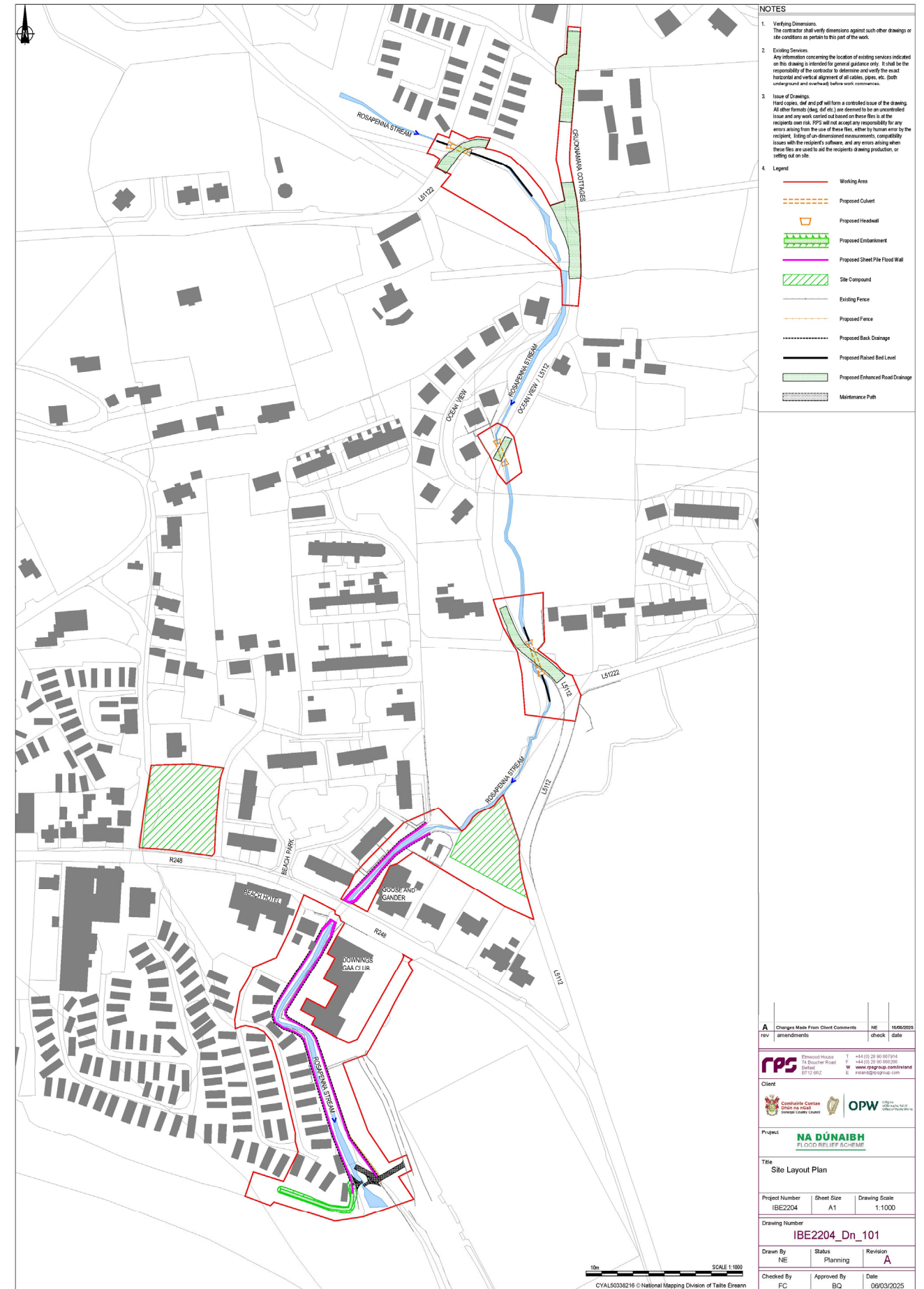
Tetra Tech RPS issued draft Compulsory Purchase Order (CPO) drawings and documents in January 2026 to Donegal County Council for review. Donegal County Council are continuing to meet with landowners to inform them how the scheme may impact their lands. Once this process is complete Tetra Tech RPS will prepare the submission to An Coimisiún Pleanála.

ENVIRONMENTAL ASSESSMENT

Tetra Tech RPS are currently finalising the three draft environmental reports, the Appropriate Assessment screening, the Environmental Impact Assessment screening and the Natura Impact Statement.

NEXT STEPS

Once the meetings with landowners are complete, Stage I engineering and environmental reports are finalised the Project Team will be in a position to submit the scheme for planning approval to An Coimisiún Pleanála.



Draft Planning Layout for the Na Dúnaibh FRS